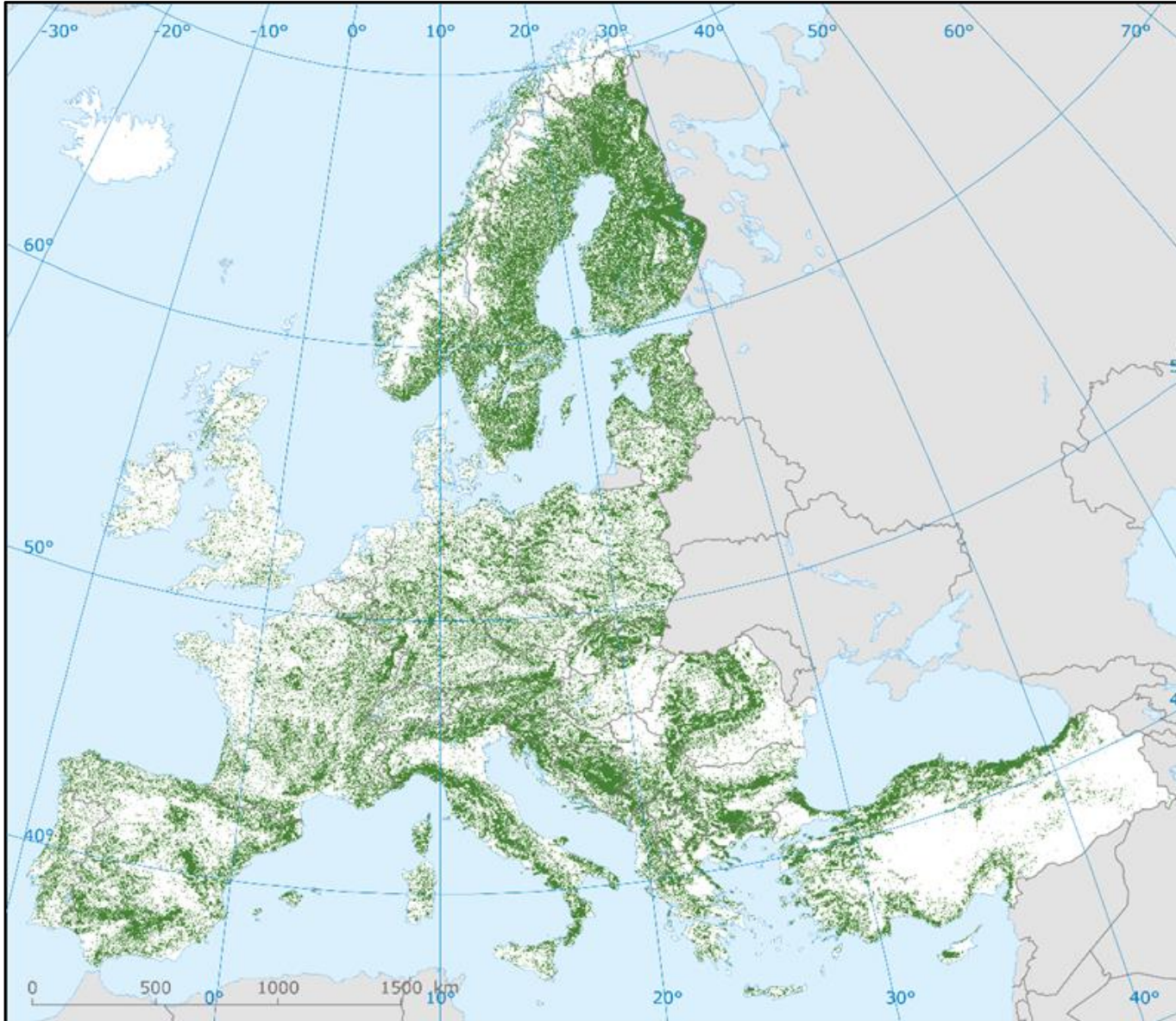




Knowledge for action: The Forest Information System for Europe (FISE)

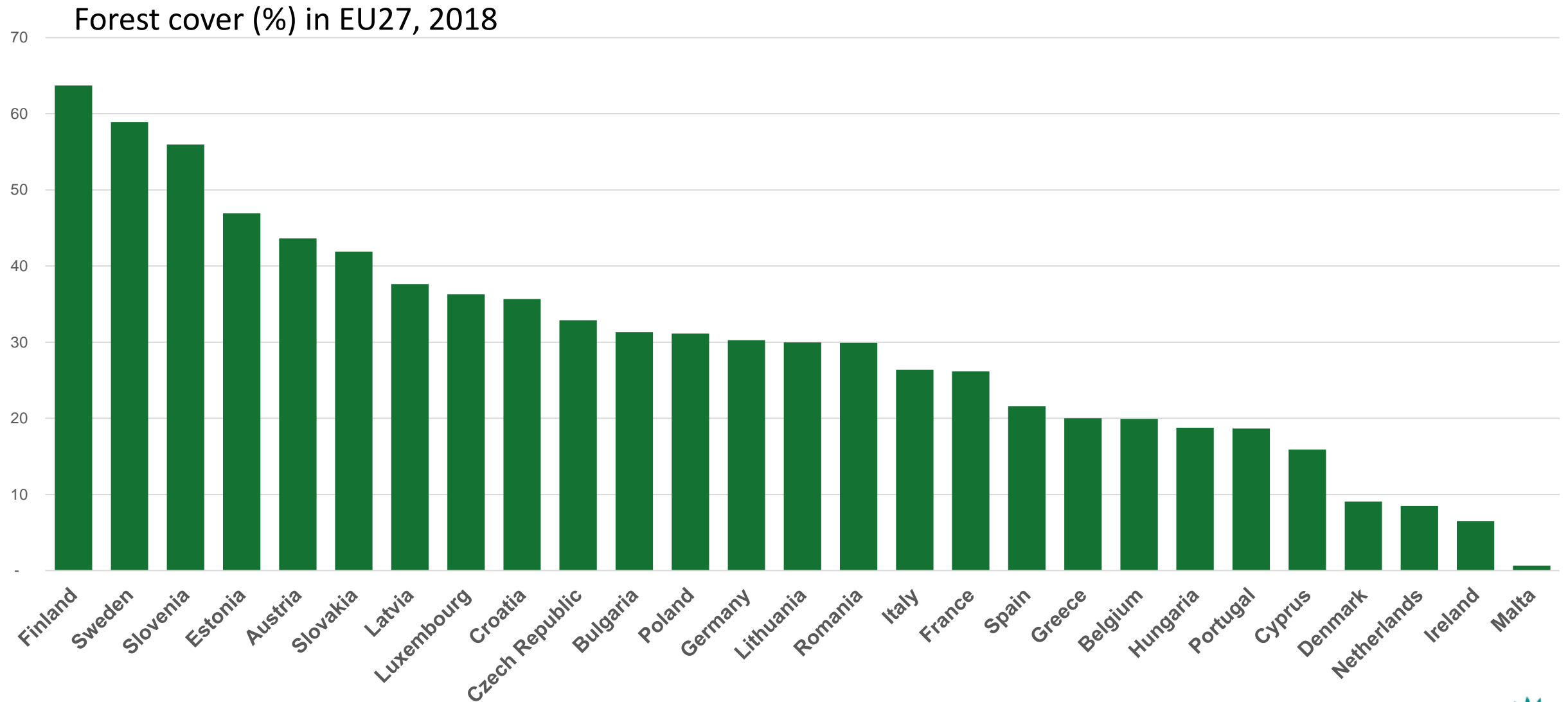
Dr Hans Bruyninckx | Forests for Biodiversity and Climate | 5 February 2020

Forest cover in EU27



- 38% of land surface
- 157 million hectares

Forest cover by country



The importance of forests



Provisioning Services

- Wood, fuel, fibers, clean water



Regulating services

- CLIMATE MITIGATION AND ADAPTATION, clean air, noise



Cultural services

- Recreation, health, spiritual, educational

Supporting services: BIODIVERSITY, soil, nutrients

Major socio-economic and bio-economy driver in Europe



Total forest-based sector in Europe 2017

- 429,000 companies
- ~3.8 million employees
- EUR 170 billion Gross Value Added

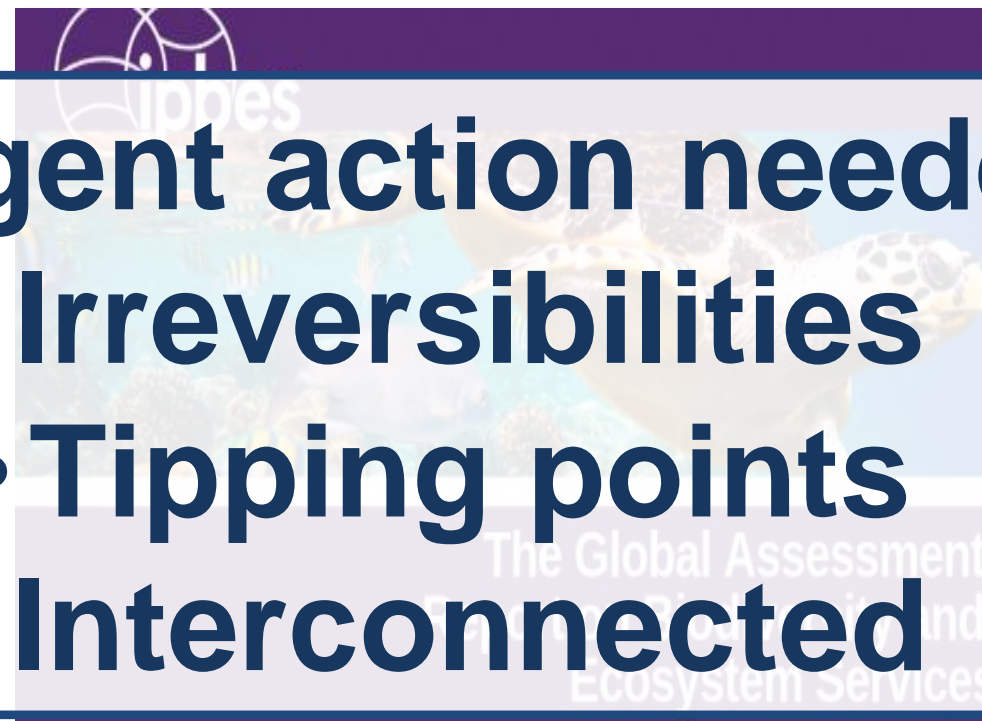
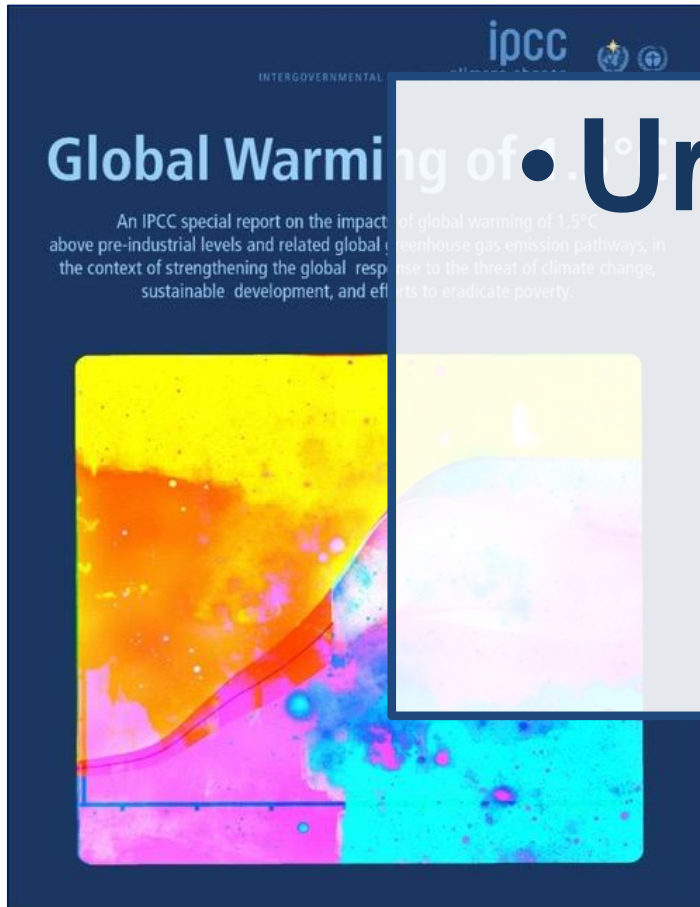


Global context: unprecedented challenges, improved knowledge

1. IPCC report on global warming of 1.5°C

2. IPBES global report on biodiversity and ecosystem services

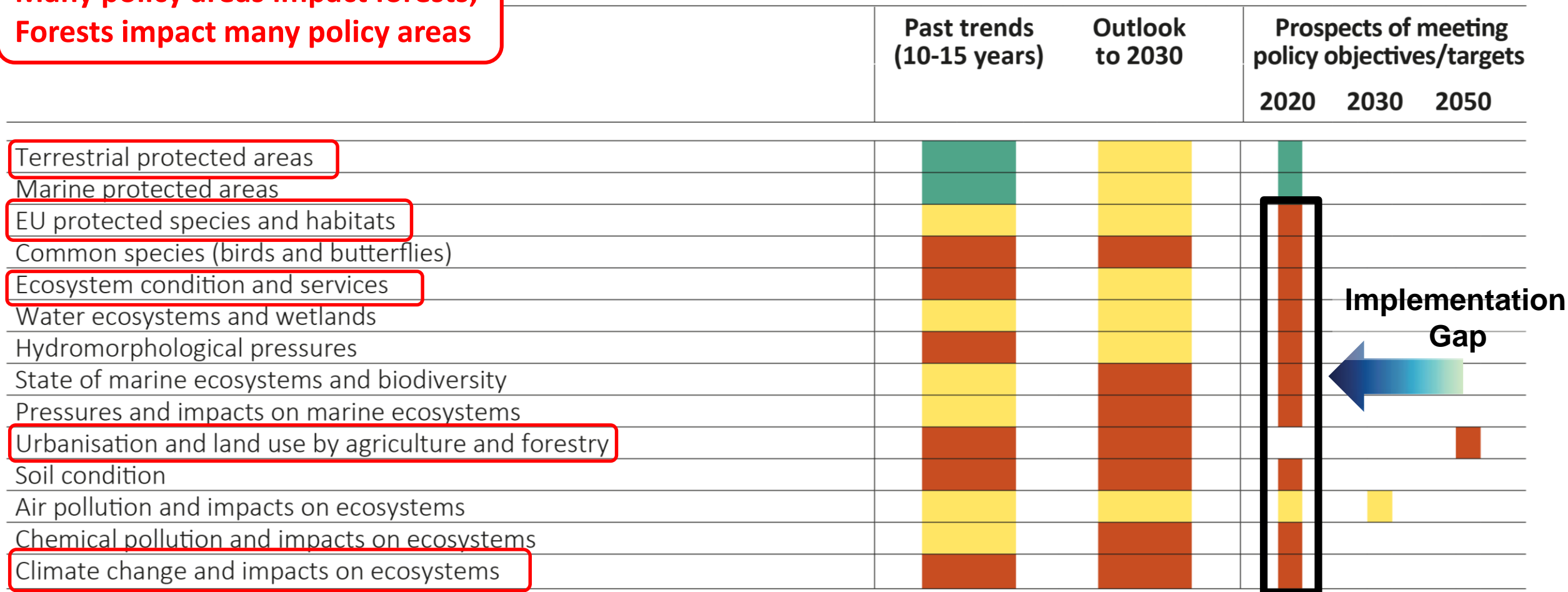
3. International Resource Panel global outlook 2019



- Urgent action needed
- Irreversibilities
- Tipping points
- Interconnected

Europe's natural capital: state and outlook

**Many policy areas impact forests;
Forests impact many policy areas**



The Forest Information System for Europe (FISE)



**FOREST INFORMATION
SYSTEM FOR EUROPE**

Topics

Policy

Countries

Knowledge

About us

Discover Europe's forests

Europe is one of the most forest-rich regions on the world. The forest area has increased over the last century and has remained stable in the last decade. They constitute the largest terrestrial ecosystem of Europe and are one of Europe's most important renewable resources.



Discover Europe's forests



Are our forests under pressure?



Are our forests diverse?



Are our forests healthy?

- Unique
- Relevant
- Political
- Knowledge-based
- EC/EEA Partnership

Trusted data, information and analytics



**FOREST INFORMATION
SYSTEM FOR EUROPE**

- Clear and easy to use
- Open access
- High resolution
- Meaningful data and narratives

FOREST COVER MAKES UP

38% of EU27 land surface
(157 million ha)

34% of EEA39 land surface
(201 million ha)

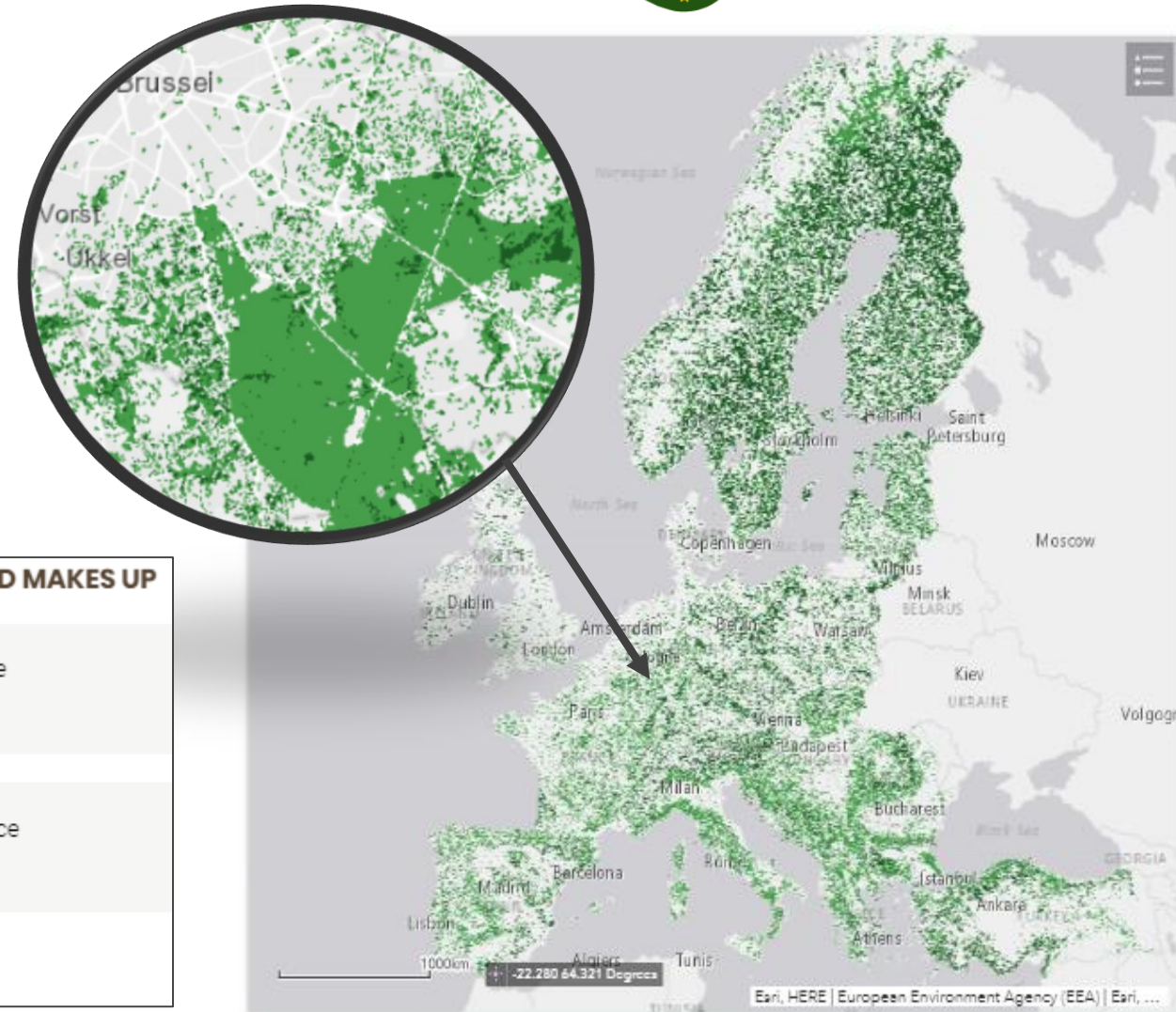
Source: Corine Land Cover 2018

FOREST AND OTHER WOODED LAND MAKES UP

44% of the EU27 land surface
(182 million ha)

39% of the EEA39 land surface
(229 million ha)

Source: Forest Europe 2015



Next steps: upcoming topics

Topics

Forests and their ecosystems are currently at the top of policy agenda and public attention in the context of the protection of biodiversity, climate change impacts, their adaptation and mitigation as well as renewable energy issues. Sustainable forest management is required to balance the environmental, social and economic pillars of sustainability.



Forest basic
information

**Launched
today**



Nature and
biodiversity

**New topics to be
included**



Forest and climate
change



Forest health and
resilience



Bioeconomy

FISE informs and shapes forest-related policies



The EU Biodiversity Strategy



This is platform prototype 1. Coming soon to FISE:



- Further Copernicus integration
- Accumulating time series (e.g. Corine land cover and land cover change)
- Country data (e.g. CO₂ emissions, land use, forest species and habitats)
- Access to data from other systems: BISE, WISE, CLIMATE ADAPT, etc.
- Socio-economic data from UNECE and Eurostat





Thank you

<https://forest.eea.europa.eu/>

Dr Hans Bruyninckx | Forests for Biodiversity and Climate | 5 February 2020